



Radio Console System 9500

The next generation TETRA dispatch solution

Radio Console System (RCS) 9500 provides dispatchers an easy and quick access to TETRA communication features while offering smooth migration from analogue PMR to digital TETRA, benefits of a full-IP solution and versatile interfaces for Computer Aided Dispatch (CAD) and Call Taking systems.

As many organisations attest, TETRA integration is often the most difficult part of a control room project. That is why selecting a fully integrated Professional Mobile Radio (PMR) dispatch solution that adapts to your way of working and just as important, fits within your budget, is crucial.

The TETRA-based RCS 9500 is a full-featured solution, easily accommodating modern control rooms of any size and throughout public and private sector environments. Emergency response centres, in particular, can benefit from its rich critical communications features and failsafe design. The system also suits centralized and distributed operational models, enabling dispatchers to manage one or multiple response organisations.

Available in three product variants – Standard, Lite and Wireless – the RCS 9500 solution is easily deployed, working from day one to reduce project risks and lower overall project costs.

RCS 9500 is a fully-featured dispatching solution with extreme flexibility. It lets you to build your own Graphical User Interfaces to exactly suit the way your organisation really works.

In addition to supporting all of the most desired TETRA communications features, the RCS 9500 offers optional interfaces to external radio networks, Computer-Aided Dispatch (CAD) and call taking to round out your control room's operations.

AIRBUS

Radio Console System RCS 9500

Adapts to your way of working

Radio Console System 9500

RCS 9500 provides to dispatchers an easy and quick access to TETRA communication features while offering smooth migration from analogue PMR to digital TETRA, benefits of a full-IP solution and versatile interfaces for Computer Aided Dispatch (CAD) and Call Taking systems.

True Voice Over IP Dispatch

RCS 9500 is a pure Voice over IP (VoIP) radio dispatch system composed of up to 700 dispatch positions and centralized services connected via an IP network.

Adapts to operating procedures

The system supports any organisation's standard operating procedures and allows complete customization of its highly intuitive graphical user interface (GUI). This is easily accomplished using the solution's simple drag and drop editing tools.

Customize as You Like

Drag and drop editing tools allow you to freely create a user interface that is both functionally and aesthetically pleasing.

Profile-based access gives each dispatcher a view that is optimized to their tasks, while offering secure access to communication through the sharing of dispatch positions.

Keep Control of Your Costs

Intuitive user interface configuration tools eliminate the costs associated with system changes as operational processes develop.

Centralized management enables you to manage all control rooms from one location, dramatically reducing costs related to on-site support.

Direct E1 interface also supported

RCS 9500 supports direct E1 interface to TETRA network while the RCS consoles are connected via IP. It makes smooth migration from E1 to IP backbone.

Safe TETRA Integration

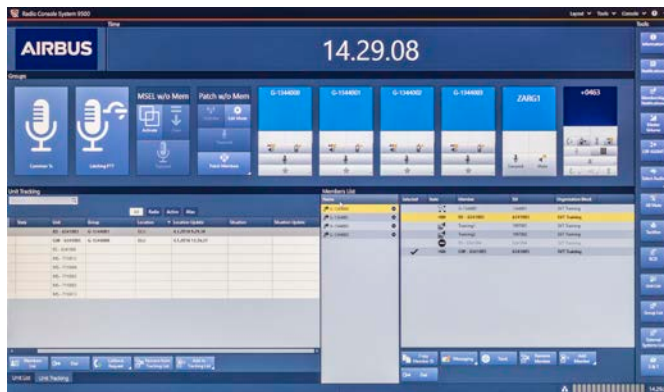
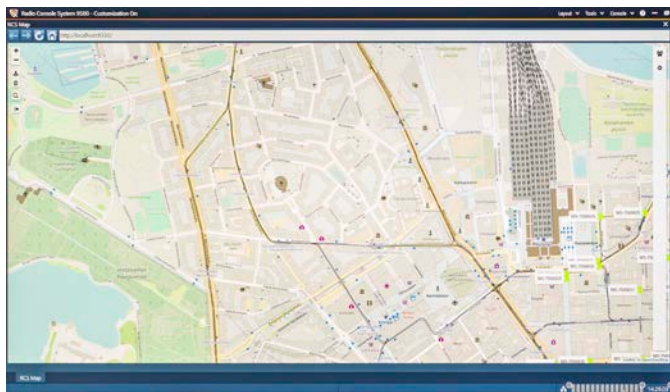
RCS 9500 can offer TETRA access to the control room applications. The solution is tested and the roadmap synchronized with TETRA system from Airbus, guaranteeing your control room's TETRA connection works from day one.

Seamless TETRA and Analogue PMR Migration

The RCS 9500 system supports up to 300 radio gateways. Each radio gateway provides the interface to a single radio channel. Each dispatch position provides access to up to 300 analogue radio channels, and on the TETRA side, up to 31 audio and 64 event monitoring ones.

Interface for Emergency Call Taking and CAD

Providing a fully integrated work environment for dispatchers is straightforward with the RCS 9500 system. Critical call taking and CAD systems can access full TETRA radio features through RCS API.



AIRBUS

For more information please contact

Airbus Defence and Space / Hiomotie 32 / 00380 Helsinki/ Finland / T: +358 10 4080 000

e-mail: marketing@securelandcommunications.com

Airbus Defence and Space / Söflinger Str. 100 / 89077 Ulm / Germany / T: +49 /731/1751-0

Airbus Defence and Space / MetaPole / 1, bld Jean Moulin / CS 40001 / 78996 Elancourt Cedex / France / T: +33 (0)1 61 38 50 00

04/2018 Copyright © 2015–2018 Airbus Defence and Space. All rights reserved. This document is not contractual. Subject to change without notice. Product and company names mentioned herein may be trademarks or trade names of their respective owners.